



MANOR FARM BARN
EDLESBOROUGH



MANOR FARM BARNES

EDLESBOROUGH

This stunning development, set in the charming Buckinghamshire village of Edlesborough boasts some truly exceptional properties; including three fully restored barn conversions and three brand new barn-inspired homes.

All six properties have been designed to the exceptional McCann Homes high standard, and comes complete with bespoke character features. The level of craftsmanship and exclusive detailing allows for spacious, flexible living in contemporary yet elegant surroundings.

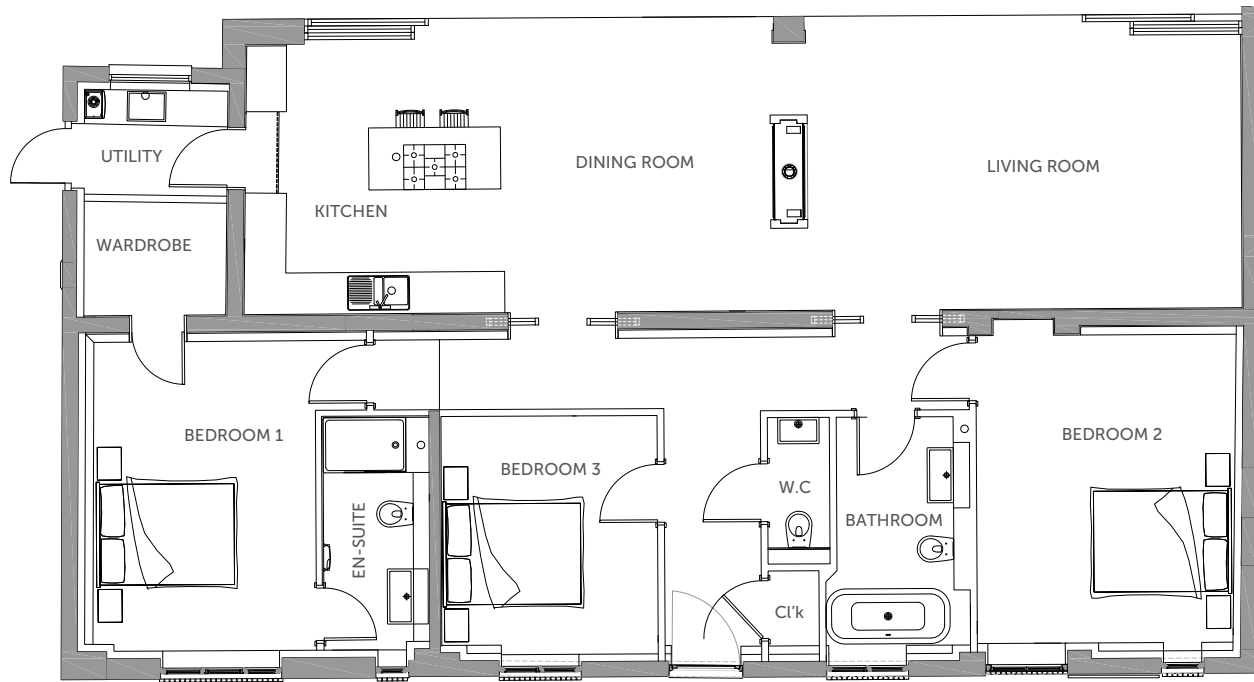
This exclusive gated development lies within the heart of the Aylesbury Vale district and falls under the catchment area for some of Aylesbury's most sought after schools.





PLOT 1 MOAT COTTAGE

GROUND FLOOR

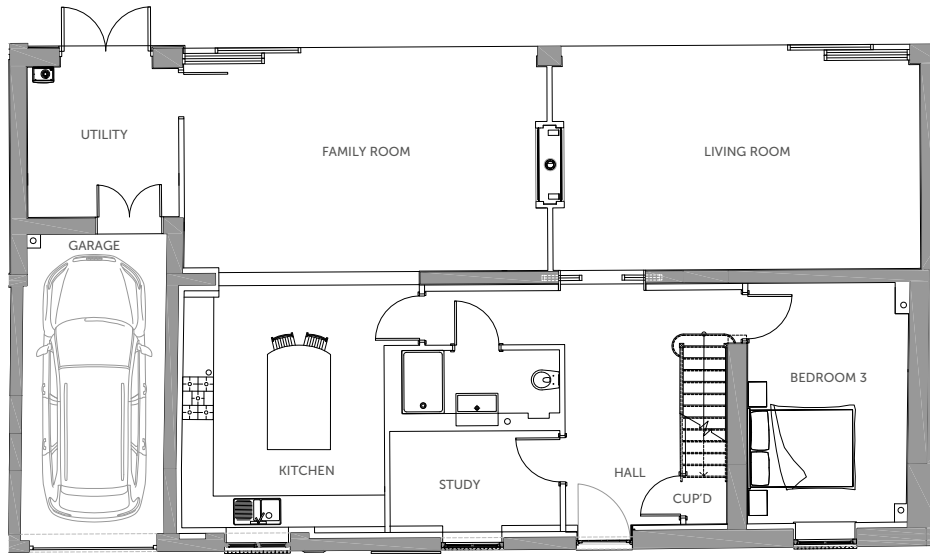


- 3 Bedrooms
- 2 Bathrooms
- Open Plan Living
- Bespoke Handmade Kitchen
- Miele Appliances
- Bertazzoni Range
- Underfloor Heating
- Duravit Sanitary Ware
- Garden Sides onto Moat

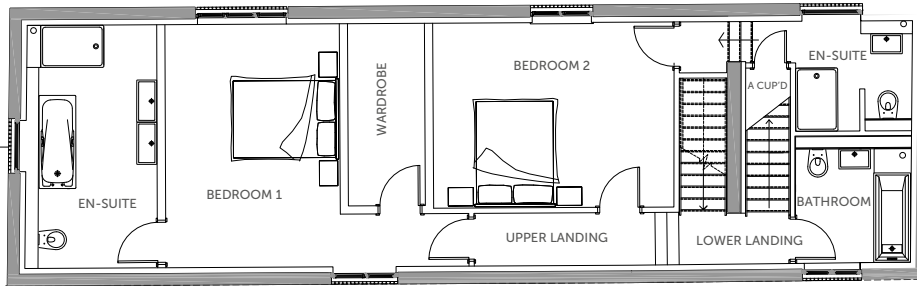


PLOT 2 THE DOVECOT

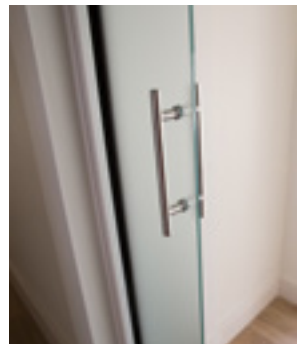
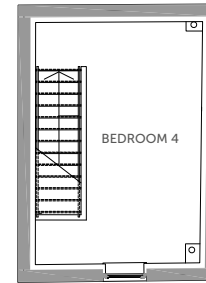
GROUND FLOOR



FIRST FLOOR



SECOND FLOOR

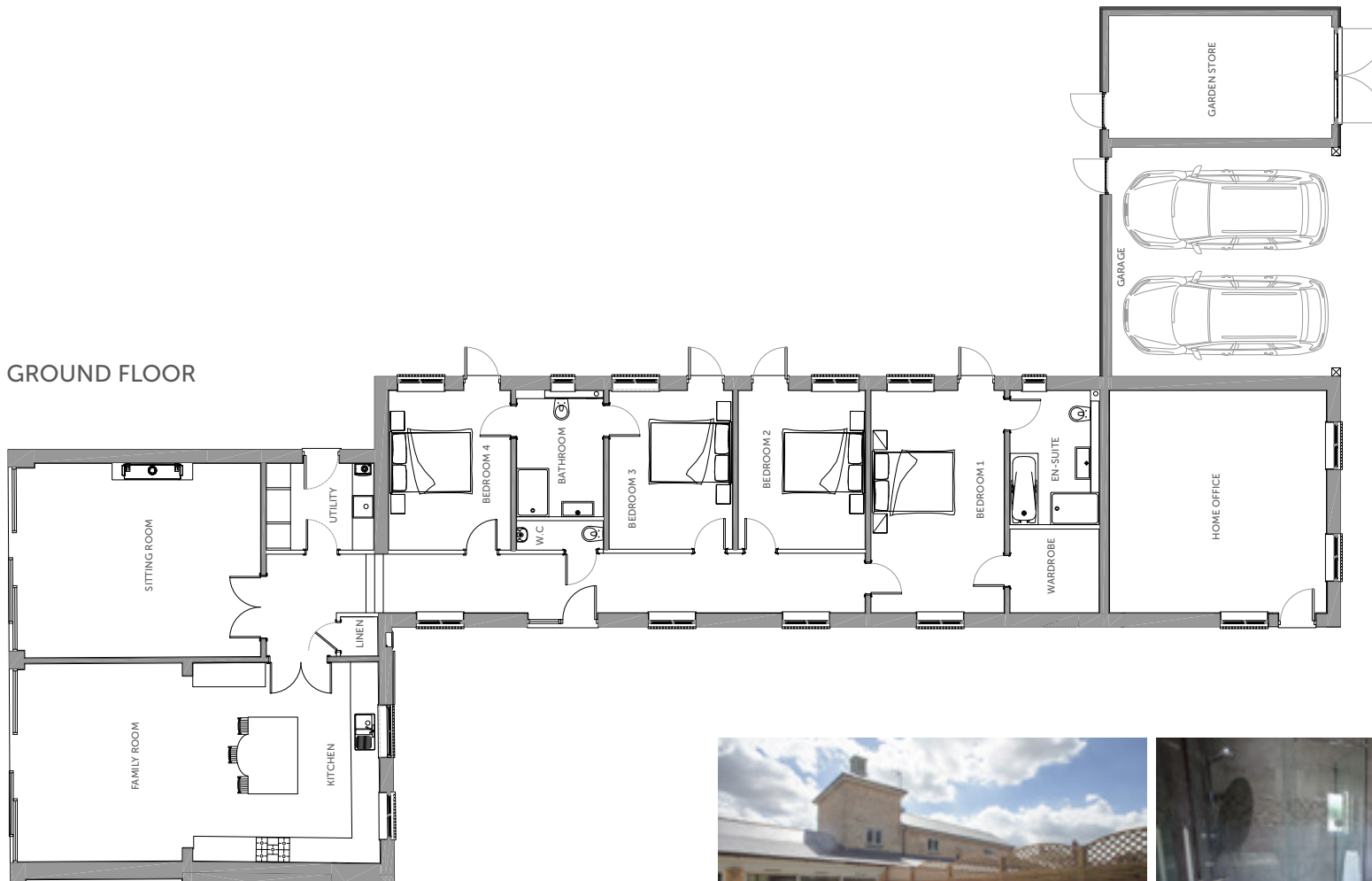


- 4 Bedrooms
- 4 Bathrooms
- 2 Reception Rooms
- Bespoke Handmade Kitchen
- Miele Appliances
- Resin Bonded Driveway
- Off Road Space for 8 Vehicles
- Large Rear Garden
- Decked Seating Area Overlooking Moat



PLOT 3 THE KINGFISHER

GROUND FLOOR



- 4 Bedrooms
- Executive Living
- Feature Caulted Kitchen/Breakfast Room

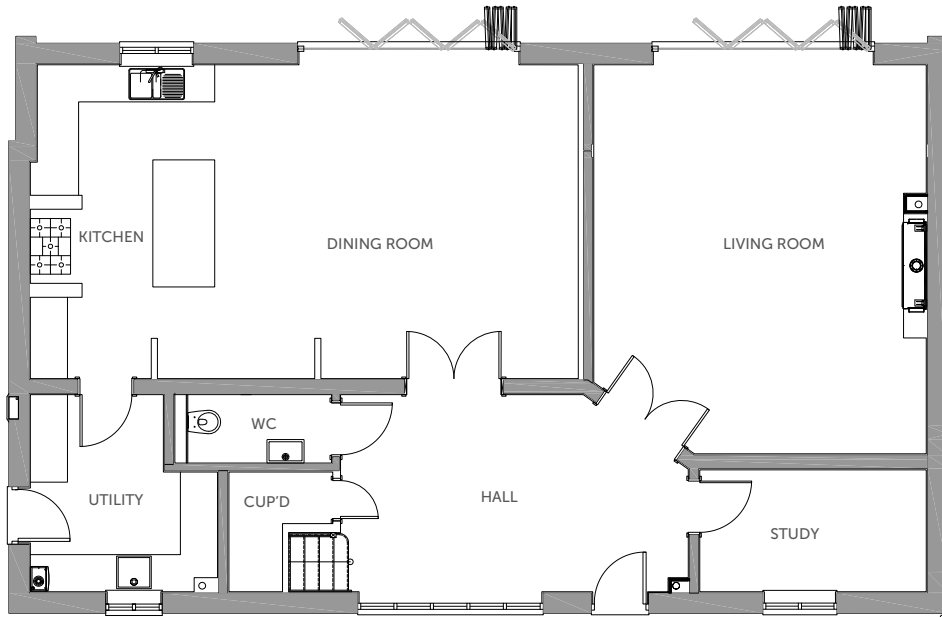
- Remote Control Real Flame Gas Fire
- Porcelanosa Tiling Throughout
- Cantilevered Decked Area Overlooking Moat

- Home Office with Separate Access
- Parking for 6 Vehicles
- Lockable Storage Area

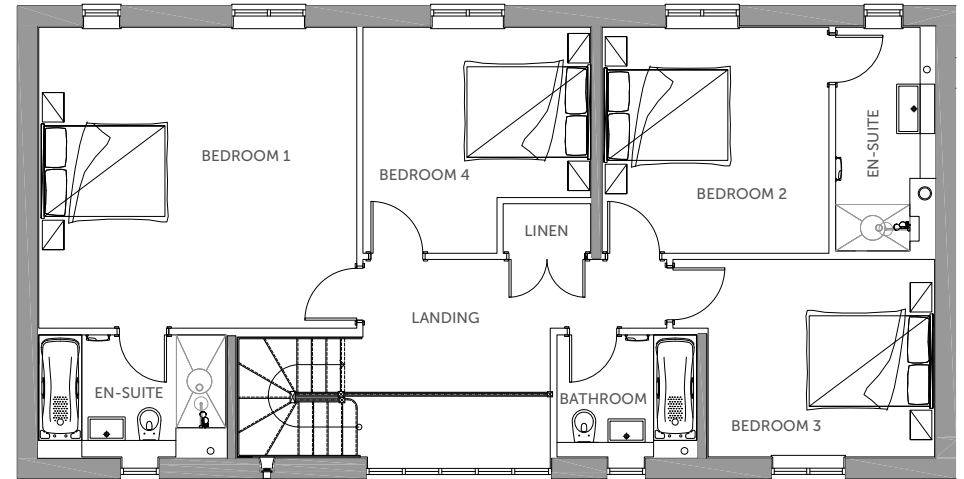


PLOT 4 THE GATEHOUSE

GROUND FLOOR



FIRST FLOOR

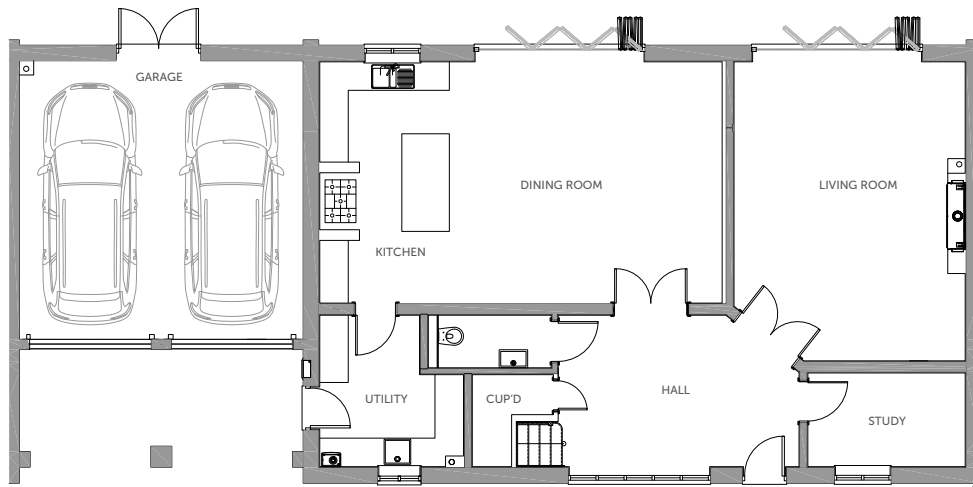


- 4 Bedrooms
- 3 Bathrooms
- 2 Reception Rooms
- Underfloor Heating to Ground and First Floor
- Impressive Feature 2 Storey Windows to Front
- Triple Car Port
- Large Formal Gardens with Adjoining Paddock
- Bespoke Handmade Kitchen with Miele Products
- Bifold Doors to Garden

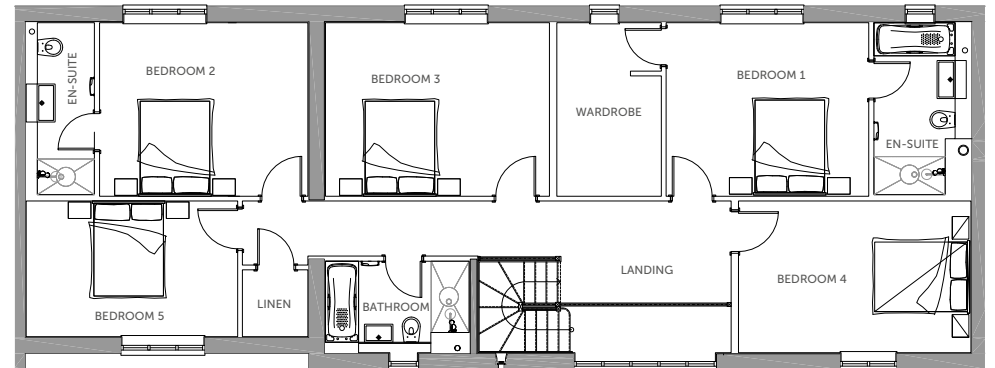


PLOT 5 THE MEWS

GROUND FLOOR



FIRST FLOOR

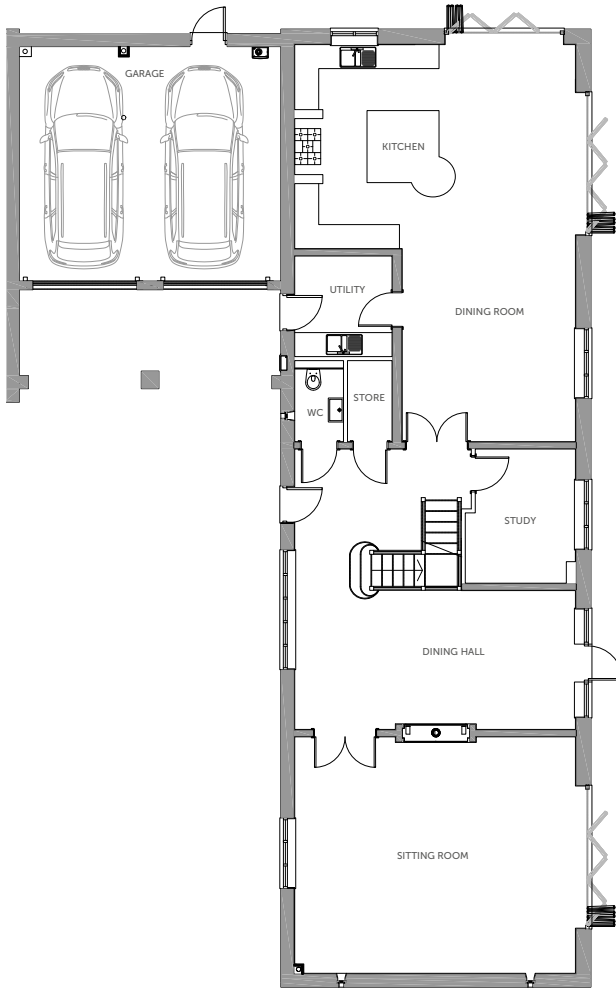


- 5 Bedrooms
- 3 Bathrooms
- 2 Reception Rooms
- Underfloor Heating to Ground and First Floor
- Kitchen/Breakfast Family Room with Bifold Doors to Garden
- Porcelanosa Tiling Throughout
- Large Formal Gardens
- Adjoining Paddock Approx. 1 Acre (available for Separate Negotiation)
- 4/5 Vehicle Resin Bonded Driveway

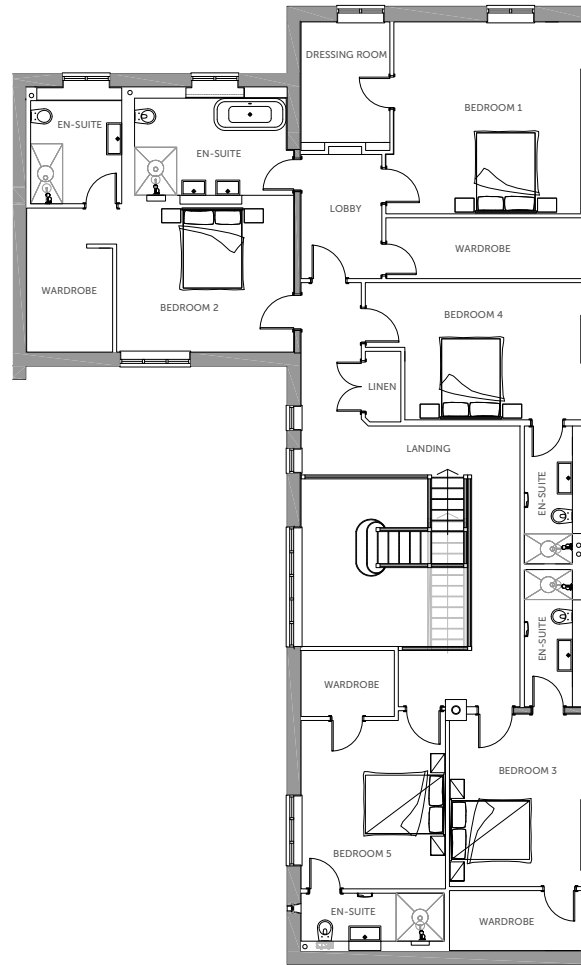


PLOT 6 THE PADDOCKS

GROUND FLOOR

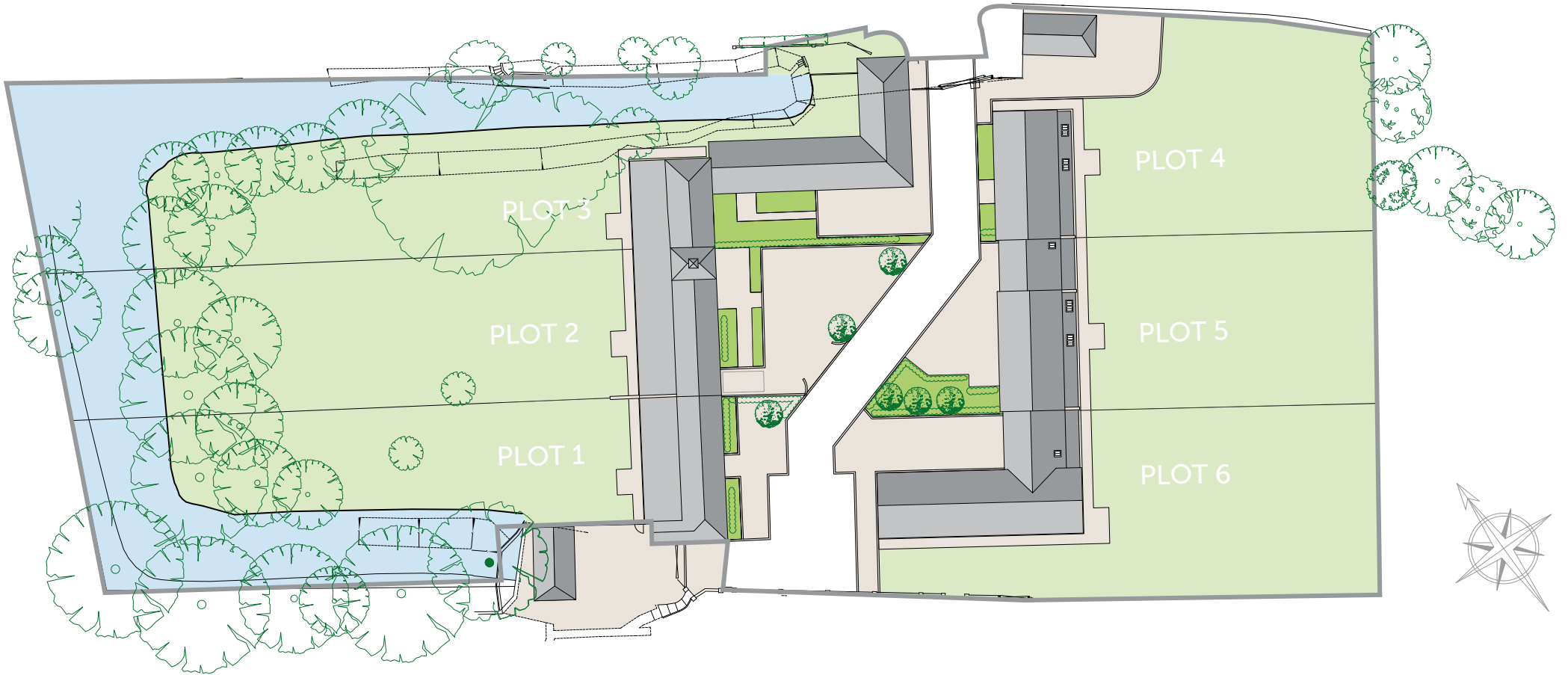


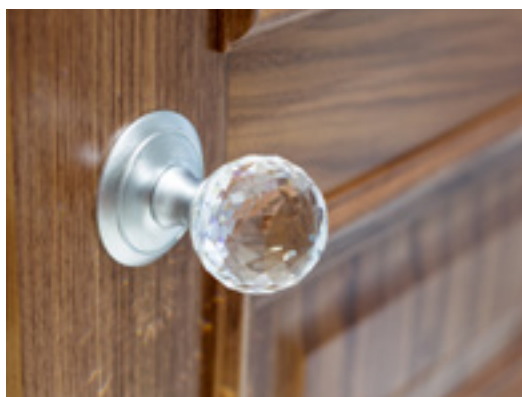
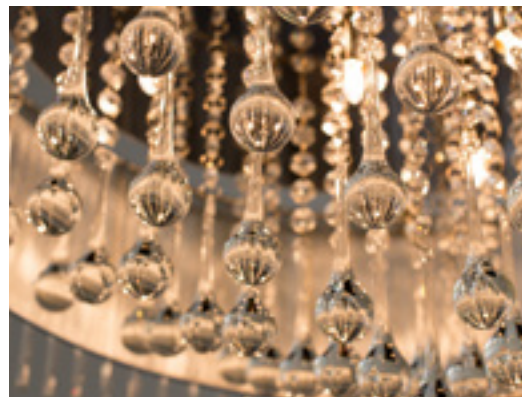
FIRST FLOOR



- 5 Bedrooms
- 5 Ensuite Bathrooms
- Feature Gallery Staircase
- Approaching 4,000 sq ft of Internal Accommodation
- Glazed Back to Back Remote Control Fireplace
- Underfloor Heating to Ground & First Floor
- Bifold Doors Opening to Rear Garden
- 1.9 Acre Adjoining Paddock with Views Over Countryside
- Remote Control Doors to Double Garage

SITE MAP





MANOR FARM BARNs

EDLESBOROUGH

Edlesborough is considered a highly desirable commuter village with excellent transport links by road, rail and air.

Mainline stations include Tring, Cheddington, Leighton Buzzard and Berkhamsted providing regular and direct links to London Euston with travel times between 30mins to under an hour. Luton airport is only 30 minutes drive away and with easy access to the M1 (J9 & J10).





McCANN HOMES

At McCann Homes, we have built an enviable reputation for building quality homes. We are based in Milton Keynes and currently have exciting developments underway in handpicked locations across Buckinghamshire, Bedfordshire and Nottinghamshire.

We have dealt with a wide variety of developments and with our attention to detail and flair for innovative design, combined with our excellent after sales care ensures our clients the best possible experience.





Woodcote • Woodside • Aspley Guise • Milton Keynes MK17 8EB
T 01908 608638 W www.mccannhomes.co.uk